



Office national de l'énergie

This record is submitted in compliance with Section 184 of the Canada Oil and Gas Drilling Regulations

O.D. (mm)	Weight (kg/m)	Grade	Depth Set (m KB)	Cement (m ³)
508.....	158.47/139.87	K-55.....	351.9.....	85.8.....
339.7.....	107.24/101.18	P-110.....	1350.0.....	148.2.....
177.8.....	47.62.....	T-95.....	4580.0.....	Stage 1 25.0.....
.....	Stage 2 217.3.....

Approval of the following program was obtained by (person) ... Not applicable.
(person)

Type of Plug	Interval (m KB)	Felt	Cement (m ³)
N/A.....	N/A.....	N/A.....	N/A.....

UWI: 302K026020123300 WID:

Company: ...Canadian Forest Oil Ltd. Date: ...NOVEMBER 3, 2003

Acknowledged by:
Chief Conservation Officer

Well Status

Suspended ☒

Completed ☐

Abandoned ☐

Date:
File:
WID:

UWI: ...302K026020123300.....

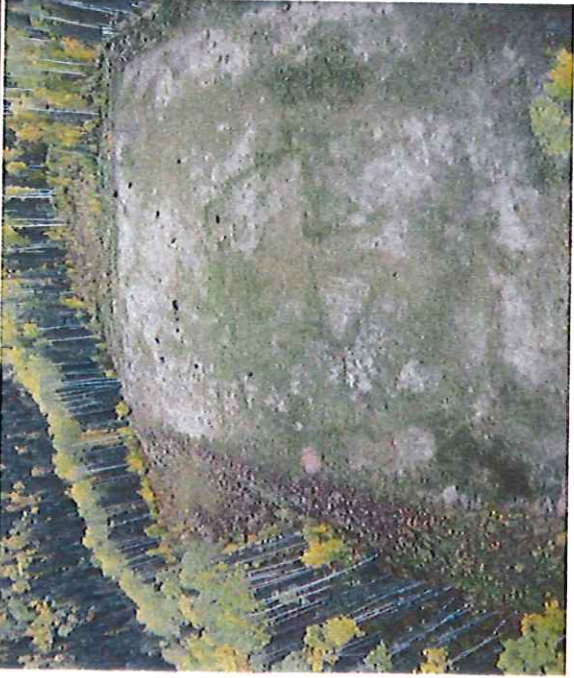
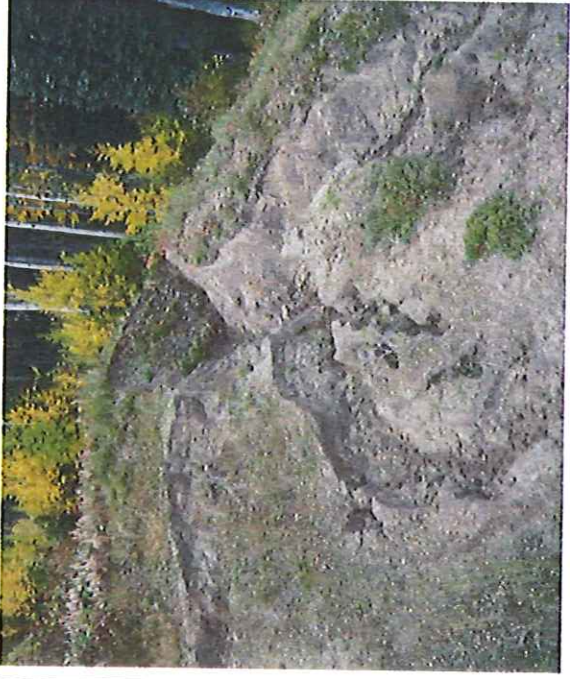


ENVIRONMENTAL INSPECTION REPORT Pg. 3

(Continued)

Date:	September 22, 2009	Permit #:	MV2003A0005
-------	--------------------	-----------	-------------

Inspection Images:

K-2

<div>Figure 1</div> <div>Aerial view of K-02 wellsite note corner with erosion</div> 	<div>Figure 2</div> <div>Aerial view of erosion in corner</div> 
<div>Figure 3</div> <div>close up of erosion</div> 	<div>Figure 4</div> <div>Leaking valve with catch drum under it.</div> 



CANADIAN FOREST OIL LTD.

Suite 600, 800 - 6th Avenue S.W.
Calgary, Alberta T2P 3G3
Bus. (403) 292-8000
Fax (403) 261-7665

November 3, 2003

National Energy Board
444 - 7th Avenue S.W.
Calgary, Alberta
T2P 0X8

Attention: Terry Baker
Chief Conservation Officer

Dear Sir:

Reference: Well Termination Record
CDN FOREST et al Mount Coty 2K-02

Attached please find the following pertaining to the above referenced well:

1. Well Termination Record (in triplicate)
2. Halliburton - Tubing Schematic
3. Wellhead Schematic
4. Wellbore Schematic

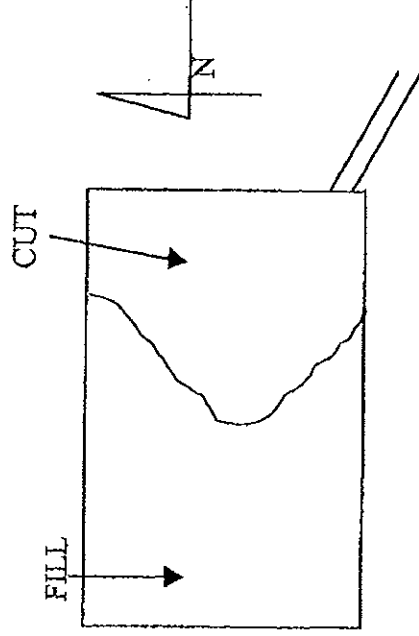
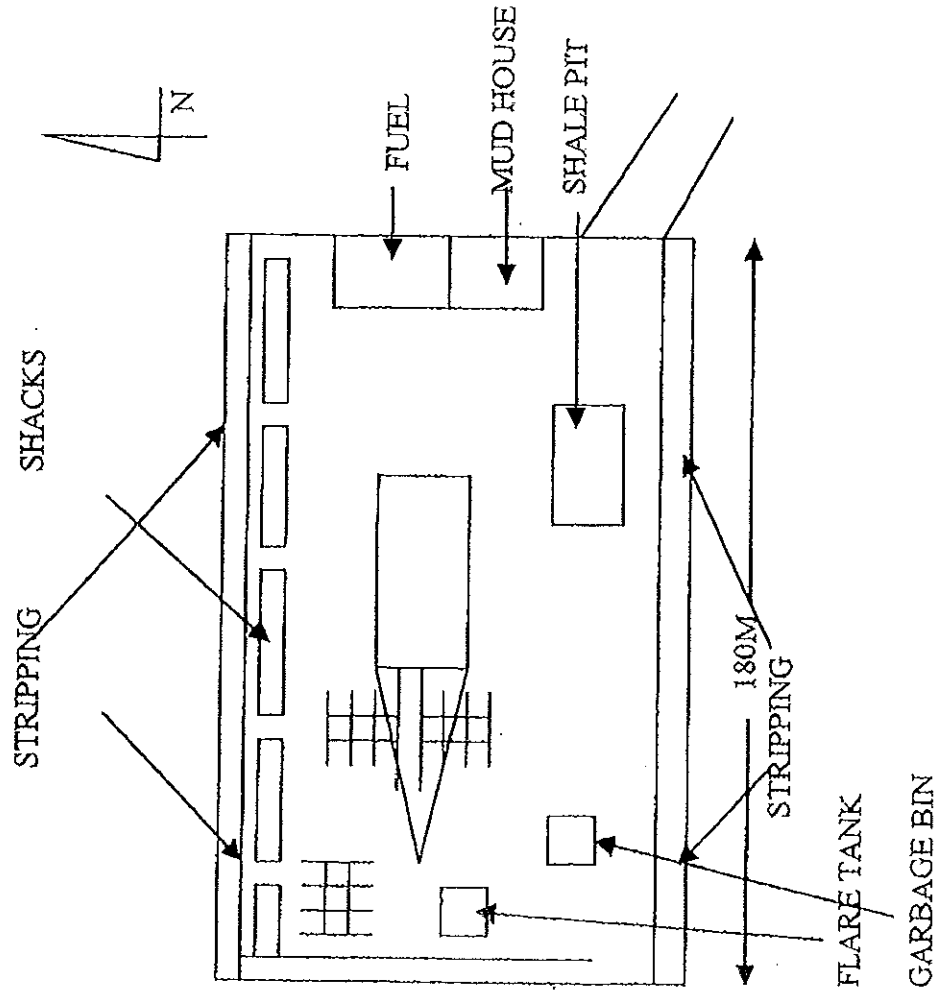
Should you have any questions or comments, please contact me at 292-8046.

Yours truly,

Denis Baudais
Drilling Engineer

DB:ms
Attachments

LEASE FOOT PRINT C.F.O. K2



TOTAL P.02

NOTE: Attach to Well Termination Record

CDN. Forest et al Mount Coty 2K-02 is suspended with a wireline set 69.85 mm PXN lock and prong set in the "XN" nipple at 4559.88m. Plug was pressure tested to 7000 kpa.

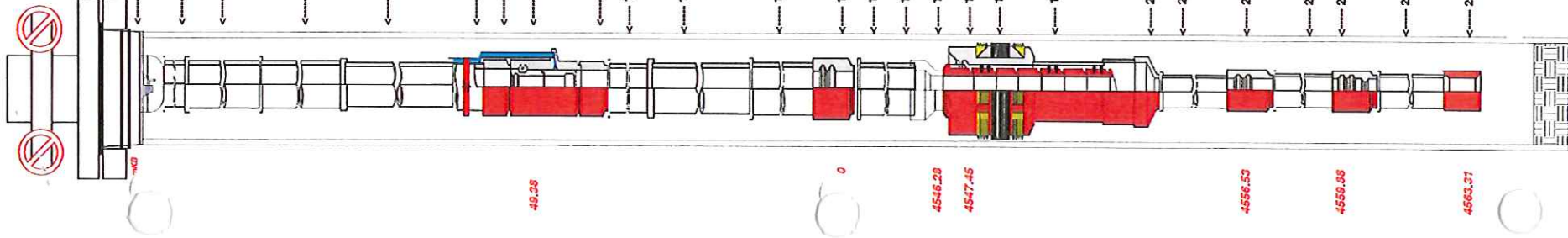
A second plug is set in the 114.3 m, RRQ safety valve landing nipple at 49.54 m. Plug is a modified Halliburton dummy valve complete with PX equalizer prong assembly. Plug was pressure tested to 7000 kpa.

The 114.3 mm tubing to 177.8 m casing annulus is filled with clean Amodrill 1410 Olefin base oil inhibited with 0.5% Wells Cargo CO 7174 amine type corrosion inhibitor for oils.

The 114.3 mm tubing is filled with produced water inhibited with 0.2% BJ Alpha-133 biocide and 5% BJ Technihib 606W corrosion inhibitor and oxygen scavenger.



HALLIBURTON



CANADIAN FOREST OIL				Wayne Kerbes/Claude Lebeuf		S.O. #	2576024
Liard				2K-02		NWT	Packer
Tubular	Size mm	Weight & Grade kg/m	Thread	Depth mkB	I.D. mm	Drift I.D. mm	
Casing	177.80	47.62	BT&C	4580.00	154.80	151.60	
Liner	0.00	0.00					
Tubing	114.30	18.75	New NK3SB		100.50	97.36	
Tubing	114.30	18.75	New NK3SB		100.50	99.60	
Weights	Initial String WT	Transfer Weight	Slackoff WT	Hole Drag			
DaN	75 DaN			14DaN			
Fluids	Fluid Type	Fluid WT kg/m3	Spec. Grav.	Pressure tested			Hydrostatic
Tubing	Water	1000.00	1.00	45 M.P.A.			44600.00
Annulus	Amodril 1410	775.00	0.78	45 M.P.A.			34500.00
Data	Kickoff Depth	Deviation Angle	H2S	Co2	BHT	BHP	
					150 C	45 M.P.A.	
Perfs	OPEN HOLE						
Collars	4543.45						
Item	Description			I.D. mm	O.D. mm	Length m	Top depth mkB
							0.00
							0.00
	K.B. - T.H.F.					8.40	0.00
1.	Tubing Hanger					0.15	8.40
2.	114.3mm x m New NK3SB Pin X Pin			100.33	114.30	0.45	8.55
3.	1 Jt. 114.3mm, 18.75kg/m New NK3SB Tubing			100.50	124.96	9.63	9.00
4.	114.3mm New NK3SB Pup Jts. (3.07m, 2.47m, 1.87m, 0.66m)			100.33	124.96	8.07	18.63
5.	2 Jts. 114.3mm, 18.75kg/m New NK3SB Tubing			100.50	124.96	19.16	26.70
6.	114.3mm x 1.8m New NK3SB Pup Jt.			100.33	124.96	1.85	45.86
7.	114.3mm New NK3SB x 1.8m Halliburton Flow Coupling			100.96	131.57	1.83	47.71
8.	114.3mm New NK3SB Halliburton Safety Valve Landing Nipple c/w 96.85mm RRQ Profile , Incoloy 925 (Part # 111728)			96.85	143.25	0.65	49.54
9.	114.3mm New NK3SB X 0.83m Halliburton Flow Coupling			100.96	131.57	0.83	50.19
10.	114.3mm x 1.2m New NK3SB Pup Jt.			100.33	124.96	1.24	51.02
11.	466 Jts. 114.3mm, 18.75kg/m New NK3SB Tubing			100.50	124.96	4487.43	52.26
12.	114.3mm x 3.0m New NK3SB Pup Jt.			100.33	124.96	3.07	4539.69
13.	114.3mm New NK3SB Oils "X" Nipple c/w 96.85mm Bore, Incoloy 925 (Part# 92373)			96.85	131.44	0.39	4542.76
14.	114.3mm x 3.0m New NK3SB Impreglon 222 Coated Pup Jt.			100.33	124.96	3.06	4543.15
15.	88.9mm New NK3SB x 114.3mm New NK3SB X-Over, Impreglon 222 Coated			76.04	131.82	0.33	4546.21
16.	Halliburton 88.9mm New NK3SB Incoloy 925 Straight Slot Seal Locator c/w Double RTR Seal Unit, Spacer, Double RTR Seal Unit, Spacer, Triple RTR Seal Unit & Mule Shoe Bottom (Part# 69800)			74.04	113.03	1.01	4546.44
17.	Halliburton 177.8mm Hydraulic Set "BWS" Permanent Packer c/w 101.6mm Bore / Incoloy 925 Mandrel & Alias Seals (Part #101041702)			101.60	148.59	0.82	4547.45
18.	Halliburton Packer to Seal bore extension Adapter, Incoloy 925 (Part# 120054150)			106.68	148.59	0.14	4548.27
19.	Halliburton Seal Bore Extension Incoloy 925 (Part # 120122915)			101.60	127.00	4.91	4548.41
20.	Seal Bore Extension - Tbg. Adapter x 88.9mm New NK3SB, Incoloy 925 (Part# 62595)			77.21	145.79	0.30	4553.32
21.	88.9mm x 3.0m New NK3SB Hastelloy G-3 Pup Jt. (Part # 114351)			74.42	88.90	2.91	4553.62
22.	88.9mm New NK3SB Oils "X" Nipple c/w 69.85mm Bore, Incoloy 925 (Part# 69401)			69.85	107.69	0.45	4556.53
23.	88.9mm x 3.0m New NK3SB Hastelloy G-3 Pup Jt. (Part # 114351)			74.42	88.90	2.90	4556.98
24.	88.9mm New NK3SB Oils "XN" Nipple c/w 69.85mm bore & 66.93mm No-Go, Incoloy 925 (Part# 69402)			69.85	107.69	0.52	4559.88
25.	88.9mm x 3.0m New NK3SB Hastelloy G-3 Pup Jt. (Part # 114351)			74.42	88.90	2.91	4560.40
26.	88.9mm New NK3SB Halliburton Wireline Pump-Out Plug, Incoloy 925 (Part# 354459)			74.04	114.04	0.23	4563.31
	Packer set @ 4548 M.K.B. Center of Element						4563.54
	Seals landed @ 4552.42 M.K.B. / 1 meter from bottom / Overall length 5.98m						4563.54
	Pump out plug set for 21.5 M.P.A.						4563.54
	Bottom of Tailpipe @ 4563.54 M.K.B.						4563.54

Notes: 6.35mm Incoloy (Welded) Control line.

Rev: B
Date: 24-Jan-2002

Mt Coty.xls

CANADIAN FOREST OIL – MOUNT COTY K-02

Wellhead Equipment on Location (As-built: November 04, 2003)

Part Number

Description

I. Casing Head Section

CC9-CHI135x1338SLSV-FA-00	Crown Casing Head, Type 'CC-22' w/ FBD Tools, 13 5/8" 5000# Flanged Top X 13 3/8 Slip Lock Bottom, w/ Type 'FA-SL' Landing Base. Two 2 1/16" 5000# SSOs w/ 1 1/2" Sharp-V VRT, 13 3/8" 'PI' Secondary Prep. Temp Rating 'L'. Material Class 'DD', PSL-2 (SN: 110898-01)
2G-S2SB60-T37-2	Crown Gate Valve, Model A, 2 1/16" 5000# Flanged Ends, T-37 Trim, Temp Rating 'L', Material Class 'DD', PSL-2, PR2 (SN: NA)
CC-CS13x7A	Crown Casing Slips, Type 'CC-22', 13 5/8" X 7" Automatic, Temp Rating 'L'. Material Class 'DD', PSL-1 (SN: 107409-3)

II. Tubing Head Section

CTC-TH135X710SSPT7-3	Crown Tubing Head, Type 'CTC', 13 5/8 5000# Studded Down X 7 1/16" 10000# Flanged Top, w/ two 2 1/16" 10000# SSO, w/ aligning pin, 7" 'PI' secondary, Grade 660 Studs, PSL-3 (SN: 112869-01)
2G-S2SB100-T37-3	Crown Gate Valve, Model A, 2 1/16" 10000# Flanged Ends, T-37 Trim, Temp Rating 'L', Material Class 'DD', PSL-3, PR2 (SN: 101841-04)
2G-S2SB100-T37-3	Crown Gate Valve, Model A, 2 1/16" 10000# Flanged Ends, T-37 Trim, Temp Rating 'L', Material Class 'DD', PSL-3, PR2 (SN: 101841-05)
CTCIAEN-TH412NKBPVCL-00-3	Crown Tubing Hanger, Type 'CTCIA-EN', 7 1/16" X 4 1/2" New NK3SB, 12.75# Box X Box w/ 4" Type 'H' BPV Thread, Extended Neck, 1/2" LP Control Line Port, HSN S-Seals, Temp Rating 'L'. Material Class 'HH', PSL-3 (SN: 113017-1)

III. Top Section

AEN-TB710X410SUCL-00-3	Crown Tubing Bonnet, Type 'AEN', Double Studded, 7 1/16" 10000# Bottom X 4 1/16" 10000# Top, w/ Extended Neck prep, w/ 1/2" LP Port and Hidden Needle Valve for Control Line, NACE Bolting, Inconel 625 Inlay Seal Pocket, Temp Rating 'L'. Material Class 'DD-HH', PSL-3 (SN: 113130-1)
------------------------	--

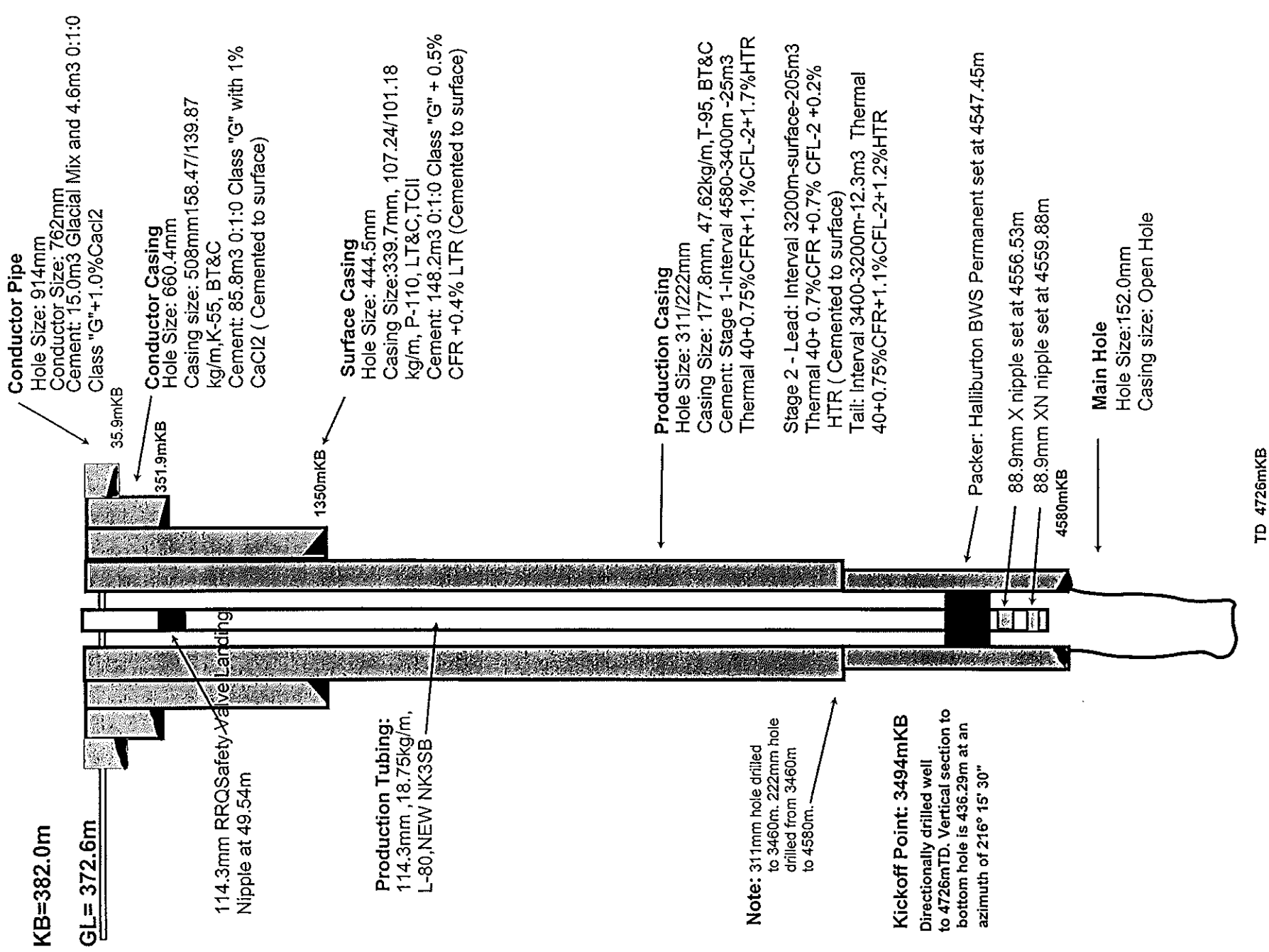
GV4F10T-24	McEvoy Gate Valve, Reman, 4 1/16" 10000# Flanged Ends, T-24 Trim (SN: 1694-12)
GV4F10T-24	McEvoy Gate Valve, Reman, 4 1/16" 10000# Flanged Ends, T-24 Trim (SN: 4171-1)
*NCN	CRC Bottom Hole Test Adapter, 4 1/16" 10000# X 4 1/2" EUE

WELLBORE SCHEMATIC

CDN FORESTetal MOUNT COTY 2K-02

UWI:302K026020123300

November 2003 Rev 1

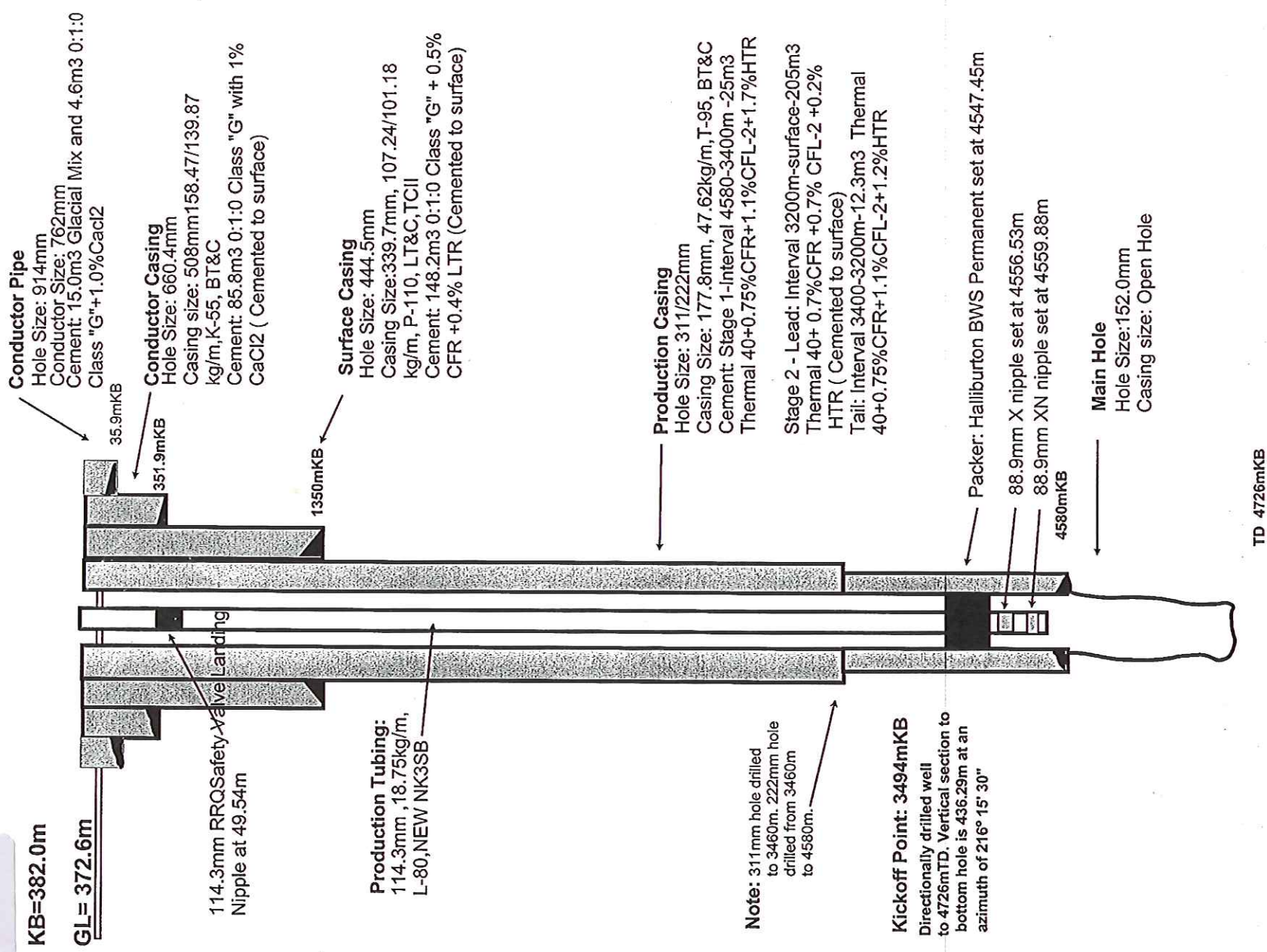


MB
Kty

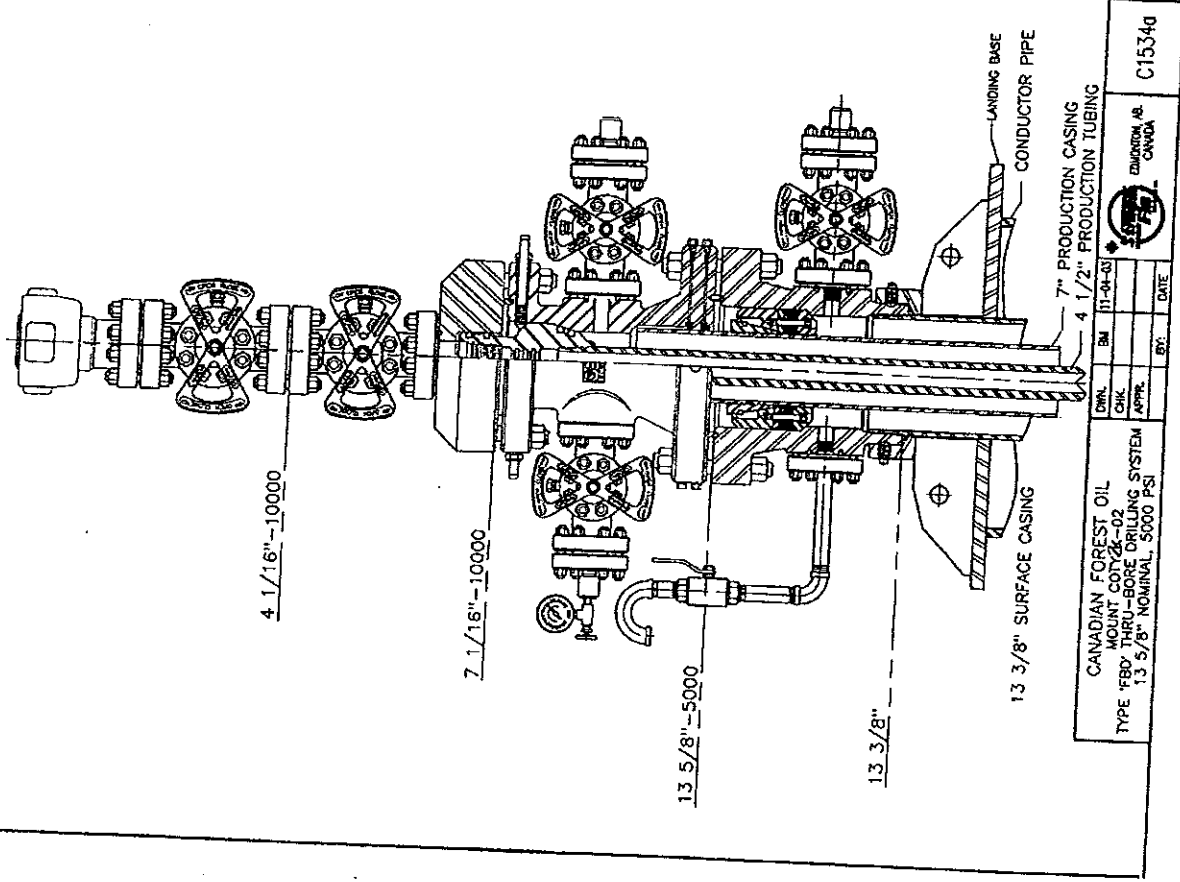
WELLBORE SCHEMATIC CDN FORESTetal MOUNT COTY 2K-02

UWI:302K026020123300

November 2003 Rev 1



Waggle



Final As Built Wellhead
Sept 24/03.



BIT RUN SUMMARY REPORT

WELL NAME : CDN FOREST ETAL MOUNT COTY 2K-02
FIELD : MOUNT COTY
AFE NO. : 034006-R1

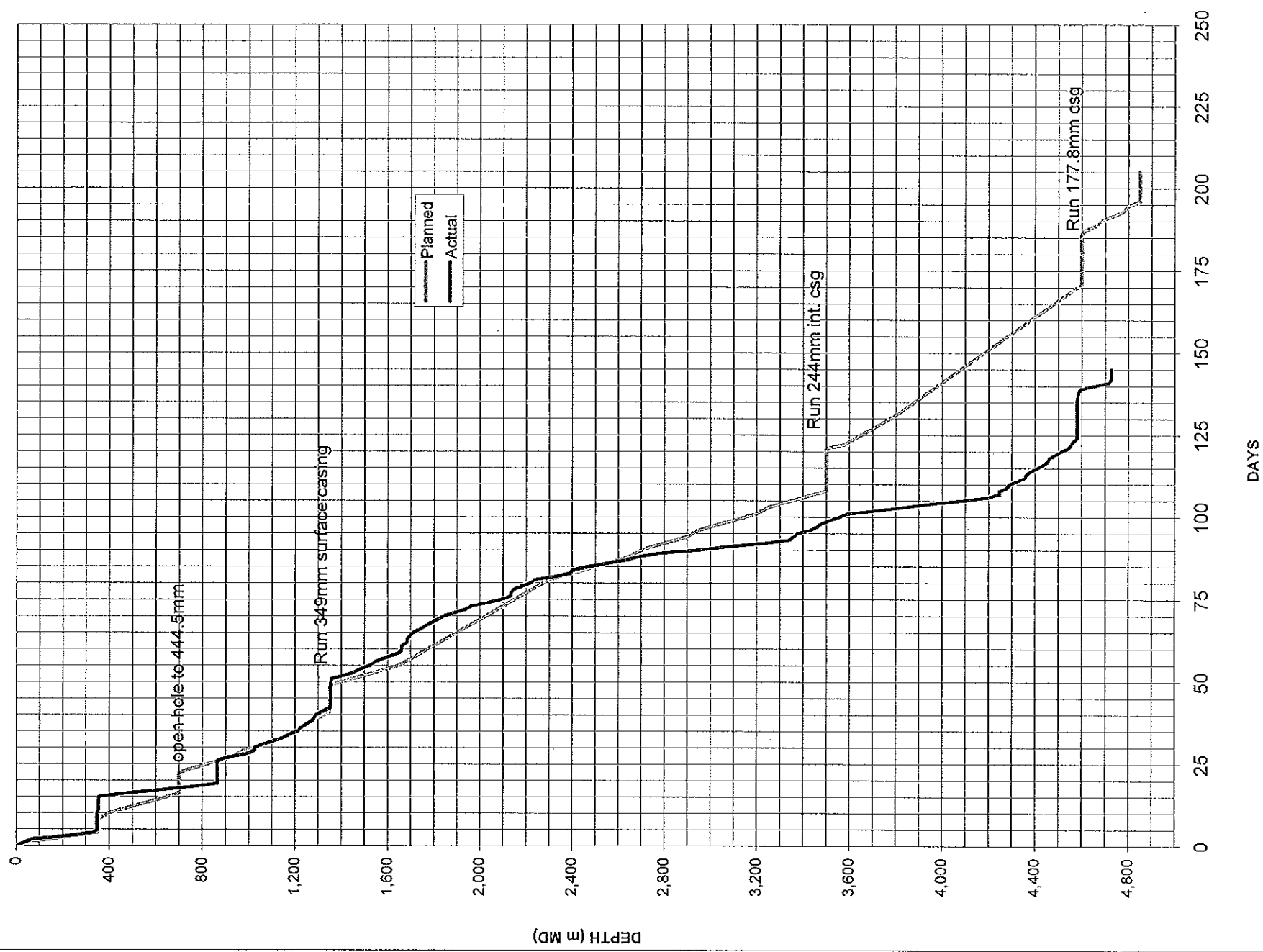
WELL ID NO : 2K-02-60-20-123-30
LICENSE# : WDI1993

RUN	#	BIT	#	BIT	SIZE	MFG.	MODEL	SERIAL#	1	2	3	4	5	6	7	8	JT	TFA	DPTH	IN	DPTH	OUT	LGTH	DRIL	CUM	ROP	I	O	D	L	B	G	S	R
660	1	REED	41447	MAX-G3	446BC	HUGHES CHRIS	MAX-G3	446BC	19	22	22	22	22	22	22	0	0	1,058.1	65.00	348.00	0.00	65.00	11.50	11.50	5.65	1	1	WT	A	A	2	1	NO	BHA
445	2	HUGHES CHRIS	446BC	MAX-G3	446BC	HUGHES CHRIS	MAX-G3	446BC	19	14	14	14	16	16	22	0	0	1,841.6	348.00	348.00	0.00	27.00	40.25	51.75	6.73	3	3	WT	A	A	E	1	NO	BHA
3	2A	HUGHES CHRIS	446BC	MAX-G3	446BC	HUGHES CHRIS	MAX-G3	446BC	19	14	14	14	16	16	22	0	0	1,839.1	348.00	348.00	0.00	27.00	40.25	51.75	6.73	3	3	WT	A	A	E	1	NO	BHA
4	2B	HUGHES CHRIS	446BC	MAX-G3	446BC	HUGHES CHRIS	MAX-G3	446BC	19	14	14	14	16	16	22	0	0	1,839.1	348.00	348.00	0.00	27.00	40.25	51.75	6.73	3	3	WT	A	A	E	1	NO	BHA
5	5	REED	41477	Y11	41477	REED	Y11	41477	22	22	22	22	22	22	22	0	0	1,161.2	349.00	349.00	0.00	6.00	4.25	57.00	1.41	3	3	WT	A	A	5	1	NO	TD
6	6	2C	445	HUGHES CHRIS	A46BC	HUGHES CHRIS	MAX-G3	A46BC	22	22	22	22	22	22	22	0	0	1,359.8	356.00	356.00	0.00	1.00	0.50	57.50	7.15	4	4	WT	A	A	E	1	NO	BHA
7	7	3	311	VAREL	189275	CH24JMS	CH24JMS	189275	19	19	19	13	16	16	16	0	0	1,455.2	351.00	351.00	0.00	0.00	128.50	71.00	2.00	4	4	WT	A	A	E	1	NO	BHA
8	8	3A	444	BAKER HUGHES	MX-55DX	6001525	BAKER HUGHES	MX-55DX	22	22	22	29	29	29	29	0	0	1,796.7	864.50	1,028.00	1,028.00	163.00	50.75	179.25	3.21	6	6	WT	A	A	0	0	NO	BHA
9	9	4	444	BAKER HUGHES	MX-55DX	6001525	BAKER HUGHES	MX-55DX	22	22	22	29	29	29	29	0	0	1,803.7	1,028.00	1,146.00	1,146.00	118.00	50.50	229.75	2.34	4	4	WT	A	A	E	1	NO	BHA
10	10	5	444	BAKER HUGHES	MX-55DX	6000294	BAKER HUGHES	MX-55DX	22	22	22	29	29	29	29	0	0	1,803.7	1,028.00	1,146.00	1,146.00	118.00	50.50	229.75	2.34	4	4	WT	A	A	E	1	NO	BHA
11	11	6	445	SMITH	M57DOD	MJ5128	SMITH	M57DOD	19	19	19	0	0	0	0	0	0	850.6	1,146.00	1,226.00	1,226.00	68.00	34.00	263.75	2.00	5	5	RG	H	H	8	8	PP	PP
12	12	7	445	HUGHES CHRIS	MX-DP55	V67DG	HUGHES CHRIS	MX-DP55	19	19	19	0	0	0	0	0	0	882.2	1,226.00	1,281.00	1,281.00	67.00	51.75	315.50	1.29	3	3	FC	A	A	E	1	BT	BHA
13	13	8	445	HUGHES CHRIS	MX-DP55	V67DG	HUGHES CHRIS	MX-DP55	19	19	19	0	0	0	0	0	0	882.2	1,226.00	1,281.00	1,281.00	67.00	51.75	315.50	1.29	3	3	FC	A	A	E	1	BT	BHA
14	14	7A	445	HUGHES CHRIS	MX-DP55	ZV67DG	HUGHES CHRIS	MX-DP55	25	25	25	14	14	14	14	0	0	882.2	1,281.00	1,355.00	1,355.00	73.00	372.50	372.50	1.28	5	5	FC	A	A	F	1	BT	BHA
15	15	3B	311	VAREL	189275	CH24JMS	CH24JMS	189275	16	16	16	13	16	16	16	0	0	722.3	1,355.00	1,355.00	1,355.00	1.00	0.00	372.50	0.00	3	3	WT	A	A	E	1	BT	BHA
16	16	9	311	HUGHES CHRIS	HR-S8OD	D787K	HUGHES CHRIS	HR-S8OD	16	16	16	0	0	0	0	0	0	722.3	1,355.00	1,355.00	1,355.00	1.00	0.00	372.50	0.00	3	3	WT	A	A	E	1	BT	BHA
17	17	10	311	SMITH	F8OD	MJ4215	SMITH	F8OD	19	19	19	0	0	0	0	0	0	850.6	1,545.00	1,661.00	1,661.00	116.00	65.25	518.25	1.78	8	8	BT	A	A	F	3	PR	PR
18	18	11	311	BAKER HUGHES	ATJ-P77D	ZZS762K	BAKER HUGHES	ATJ-P77D	19	19	19	0	0	0	0	0	0	850.6	1,545.00	1,661.00	1,661.00	116.00	65.25	518.25	1.78	8	8	BT	A	A	F	3	PR	PR
19	19	12	311	BAKER HUGHES	HR-P88D	5006510	BAKER HUGHES	HR-P88D	19	19	19	0	0	0	0	0	0	850.6	1,685.00	1,696.00	1,696.00	11.00	9.25	541.50	1.19	1	1	NO	A	A	E	1	NO	TD
20	20	12A	311	BAKER HUGHES	HR-P88D	5006510	BAKER HUGHES	HR-P88D	19	19	19	0	0	0	0	0	0	850.6	1,685.00	1,696.00	1,696.00	11.00	9.25	541.50	1.19	1	1	NO	A	A	E	1	NO	TD
21	21	13	311	BAKER HUGHES	HR-P88D	500122	BAKER HUGHES	HR-P88D	19	19	19	0	0	0	0	0	0	850.6	1,685.00	1,696.00	1,696.00	11.00	9.25	541.50	1.19	1	1	NO	A	A	E	1	NO	TD
22	22	14	311	BAKER HUGHES	HR-S35	5002934	BAKER HUGHES	HR-S35	19	19	19	0	0	0	0	0	0	850.6	1,765.00	1,816.00	1,816.00	137.00	65.25	687.75	2.10	2	2	BT	A	A	E	1	NO	TD
23	23	15	311	BAKER HUGHES	GT-S28	6011333	BAKER HUGHES	GT-S28	19	19	19	0	0	0	0	0	0	850.6	1,816.00	1,957.00	1,957.00	137.00	65.25	687.75	2.10	2	2	BT	A	A	E	1	NO	TD
24	24	16	311	VAREL	ETR44GCM	185480	VAREL	ETR44GCM	21	21	21	0	0	0	0	0	0	999.9	2,134.00	2,235.00	2,235.00	101.00	809.75	809.75	1.73	4	4	CT	A	A	E	4	BT	PP
25	25	17	311	VAREL	CH34MS	190856	VAREL	CH34MS	16	16	16	0	0	0	0	0	0	595.7	2,235.00	2,397.00	2,397.00	162.00	83.50	83.50	3.70	2	2	BT	H	H	F	1	NO	BHA
26	26	18	311	SMITH	F27-PS	MM1299	SMITH	F27-PS	19	19	19	13	13	13	13	0	0	850.6	2,397.00	2,690.00	2,690.00	293.00	79.50	933.00	3.69	2	2	BT	H	H	F	1	NO	BHA
27	27	19	311	HUGHES CHRIS	HCM605	7001622	HUGHES CHRIS	F15T-PS	19	19	19	13	13	13	13	0	0	859.5	2,690.00	3,359.00	3,359.00	699.00	94.75	027.75	7.38	2	2	BT	H	H	F	1	NO	BHA
28	28	20	311	SMITH	ML7768	ZR19JT	SMITH	ML7768	19	19	19	13	13	13	13	0	0	859.5	3,359.00	3,460.00	3,460.00	98.00	52.25	117.75	1.88	2	2	CT	H	H	F	1	NO	BHA
29	29	21	222	BAKER HUGHES	GT330	ZR19JT	BAKER HUGHES	GT330	19	19	19	13	13	13	13	0	0	859.5	3,460.00	3,558.00	3,558.00	98.00	52.25	117.75	1.88	2	2	CT	H	H	F	1	NO	BHA
30	30	22	222	BAKER HUGHES	HCM-404	7001555	BAKER HUGHES	HCM-404	19	19	19	13	13	13	13	0	0	859.5	3,558.00	3,558.00	3,558.00	98.00	52.25	117.75	1.88	2	2	CT	H	H	F	1	NO	BHA
31	31	23	222	BAKER HUGHES	HCM-404	7300321	BAKER HUGHES	HCM-404	13	13	13	13	13	13	13	0	0	760.1	4,247.00	4,247.00	4,247.00	32.00	11.00	225.25	2.91	3	3	WT	H	H	X	1	NO	BHA
32	32	24	222	SMITH	FI 16VPS	MN6475	SMITH	FI 16VPS	17	17	17	17	17	17	17	0	0	721.6	4,247.00	4,247.00	4,247.00	32.00	11.00	225.25	2.91	3	3	WT	H	H	X	1	NO	BHA
33	33	25	222	SMITH	FI 31VPG	MM4516	SMITH	FI 31VPG	16	16	16	17	17	17	17	0	0	679.6	4,247.00	4,247.00	4,247.00	32.00	11.00	225.25	2.91	3	3	WT	H	H	X	1	NO	BHA
34	34	26	222	HUGHES CHRIS	ATJ-44G	ZX76DG	HUGHES CHRIS	ATJ-44G	14	14	14	14	14	14	14	0	0	481.8	4,580.00	4,580.00	4,580.00	26.00	16.50	449.25	0.00	6	6	BT	M	M	E	1	BT	BHA
35	35	27	222	HUGHES CHRIS	HR-S55R	6011655	HUGHES CHRIS	HR-S55R	14	14	14	14	14	14	14	0	0	481.8	4,580.00	4,580.00	4,580.00	26.00	16.50	449.25	0.00	6	6	BT	M	M	E	1	BT	BHA
36	36	27A	222	HUGHES CHRIS	HR-S55R	6011655	HUGHES CHRIS	HR-S55R	14	14	14	14	14	14	14	0	0	481.8	4,580.00	4,580.00	4,580.00	26.00	16.50	449.25	0.00	6	6	BT	M	M	E	1	BT	BHA
37	37	28	152	J&L	M24449	G4XP	BAKER HUGHES	ATJS4	0	0	0	0	0	0	0	0	0	0.0	4,580.00	4,580.00	4,580.00	0.00	0.00	449.25	0.00	6	6	BT	M	M	E	1	BT	BHA
38	38	29	152	BAKER HUGHES	ATJS4	5031586	BAKER HUGHES	ATJS4	0	0	0	0	0	0	0	0	0	0.0	4,580.00	4,580.00	4,580.00	0.00	0.00	449.25	0.00	6	6	BT	M	M	E	1	BT	BHA
39	39	30	152	SMITH	XP50VPS	MN4329	SMITH	XP50VPS	0	0	0	0	0	0	0	0	0	0.0	4,580.00	4,580.00	4,580.00	0.00	0.00	449.25	0.00	6	6	BT	M	M	E	1	BT	BHA
40	40	31	152	SMITH	XP50VPS	MN4328	SMITH	XP50VPS	14	14	14	14	14	14	14	0	0	0.0	4,580.00	4,580.00	4,580.00	0.00	0.00	449.25	0.00	6	6	BT	M	M	E	1	BT	BHA
41	41	32	152	SMITH	XP50VPS	MN4328	SMITH	XP50VPS	14	14	14	14	14	14	14	0	0	0.0	4,580.00	4,580.00	4,580.00	0.00	0.00	449.25	0.00	6	6	BT	M	M	E	1	BT	BHA

Exshaw - 3508m - 3508m

TIME CURVE

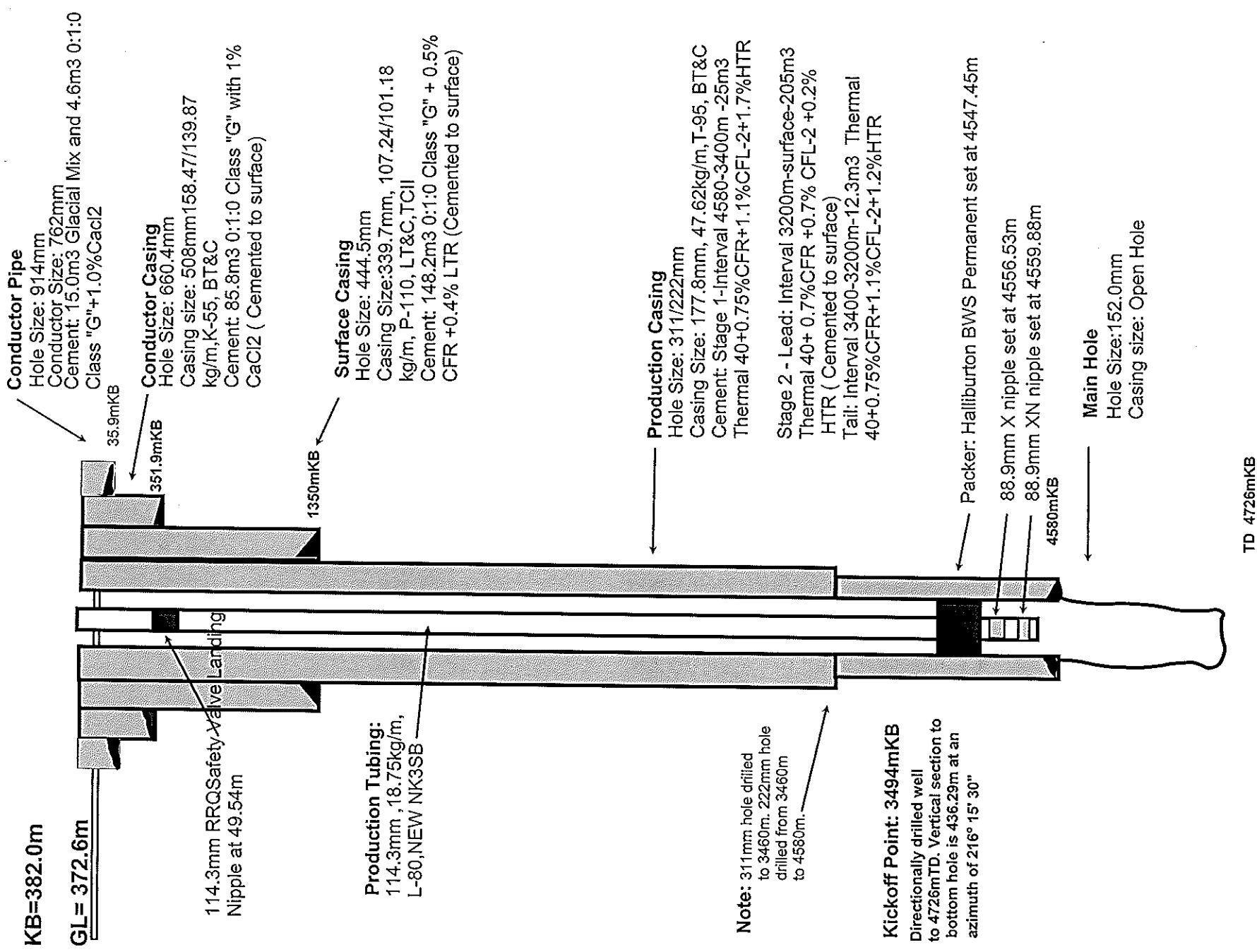
Cdn Forest et al Mount Coty 2K-02-60-20-123-30



WELLBORE SCHEMATIC CDN FORESTotal MOUNT COTY 2K-02

November 2003 Rev 1

UWI:302K026020123300



4. STRATAGRAPHIC COLUMN:

Formation Name	Formation Age	General Lithology	KB Depth (Measured)	KB Depth (TVD)	Elevation (Subsea)	Thickness (TVD)
KB			0	0.0	382.0	9.4
Ground			9.4	9.4	372.6	587.7
Scatter	Cretaceous	Sandstone, Shale & Conglomerate	597.5	597.1	-215.1	94.0
Garbutt	Cretaceous	Sandstone, Shale	691.5	691.1	-309.1	99.5
Chinkeh Toad	Cretaceous	Sandstone	791.0	790.6	-408.6	5.8
	Triassic	Silt	797.0	796.4	-414.4	68.2
Fantasque	Permian	Shale, Sandstone & Chert	865.0	864.6	-482.6	185.9
Mattson	Mississippian	Shale, Sandstone & Dolomite	1051.0	1050.5	-668.5	780.1
Flett	Mississippian	Shale, Limestone & Marlstone	1832.0	1830.6	-1448.6	434.9
Besa River	Devonian	Shale, Limestone & Marlstone	2267.0	2265.5	-1883.5	815.7
Exshaw Equivalent	Devonian	Shale	3083.0	3081.2	-2699.2	425.7
Ft Simpson Equivalent	Devonian	Shale	3508.3	3506.9	-3124.9	383.6
Seismic Marker	Devonian		3910	3890.5	-3508.5	372.9
Horn River	Devonian	Shale, Limestone & Siltstone	4319.3	4263.4	-3881.4	217.8
Nahanni Carbonate	Devonian	Limestone	4568.6	4481.2	-4099.2	13.4
Nahanni Dolomite	Devonian	Dolomite	4578.4	4494.6	-4112.6	137.3
Total Depth			4726.0	4631.9	-4249.9	

See Attachment #8 for detailed Lithology.

5. BIOSTRATAGRAPHIC DATA:

None.